

## OPERATING INSTRUCTIONS

### 1. To expose the lead:

Press and release quick-click push button top one more time

### 2. To retract the lead:

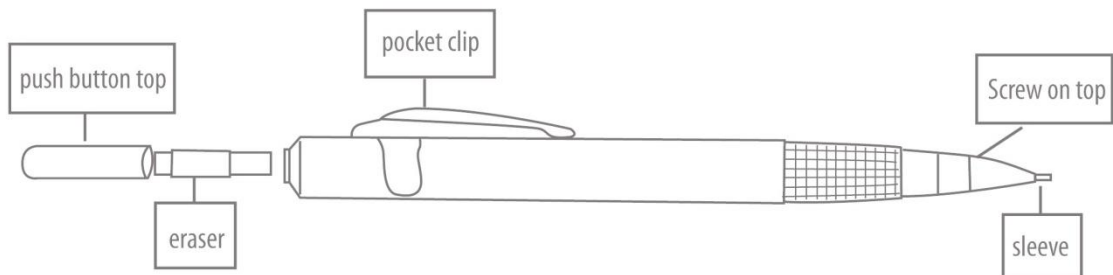
Depress quick-click push button top, hold down and apply light pressure to the top of the lead at the same time

### 3. To expose adjustable eraser:

Remove push button top

### 4. To reload lead:

Remove eraser and drop up to a dozen leads into the storage chamber. The lead advance mechanism will feed up to 12 leads continuously



## AUTOMATIC PENCIL DOESN'T WORK

### Check

1. Is there lead in the storage chamber?
2. Are there too many leads in the storage chamber?
3. Are the leads the correct diameter size?
4. Are there any crushed particles of lead blocking the point or the 'collet' gripping parts?
5. Is the protective sleeve of the pencil point bent or damaged?

### Solution

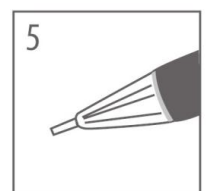
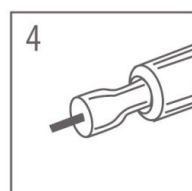
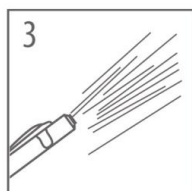
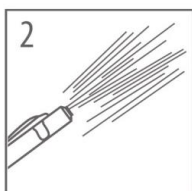
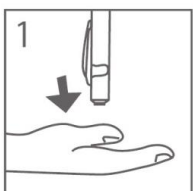
If not, reload with correct lead size

If so, reduce quantity (recommended maximum 12 leads)

If not, replace with leads of the correct diameter

If so, gently remove with the cleaning pin attached to the eraser. If your pencil does not have a cleaning pin, use a fine dressmaking pin

If so, return pencil to Pentel Customer Service Department at the address below



If the above procedures are not successful or if you have any other difficulties, please return in a padded envelope to the following address